



# Co-operative News

## December 2022

**Centenary Thurles**  
Co-operative Society Ltd

## The Perfect Gift for all your Winter Essentials.



Pick up gift cards at your local Home & Garden store. Redeemable across our range, including winter fuel.

## Welcome to the December edition of Co-operative News!

With this newsletter we are committed to giving you updates in Centenary Thurles every quarter. We want to keep you informed of what's going on in the Society – whether that is new developments in the technology we use, new products we are launching or challenges we are helping our stakeholders with. We also want to give advice on topical issues in agriculture and encourage a sustainable practice within our community.

If you would like to see some specific content in these newsletters or give us some feedback, please contact us on (0504) 91932 or email [cholmes@centenarythurles.com](mailto:cholmes@centenarythurles.com)

Follow us for all the latest news in Centenary Thurles:



@centenaryagri  
@centenaryhomeandgarden



@CThurles

## Inside this edition:

- 03 *The Dualla Show*  
—  
*Roscrea Open Day*  
—  
*The Ploughing Championships*
- 04 *Preventing winter forage deficits this winter*
- 06 *Recipients of the 2022 Ag Scholarships*  
—  
*Reminder about fencing treated with creosote*  
—  
*Signpost Farm Walk at John Sheridan's farm*
- 07 *NDC Kerrygold Quality Milk Awards*  
—  
*AHI Cell Check Awards*  
—  
*2023 Calendar*  
—  
*Dairy Nut Bonus*  
—  
*Milk Loyalty Bonus*
- 08 *Cyber Attack – Update*  
—  
*Glanbia plc Share Spin-Out*  
—  
*Harvest Report*  
—  
*ICOS Calf Welfare Charter*
- 09 *Sustainability Bonus Payment 2023 & 2024*  
—  
*Christmas Year End / Stocktaking Arrangements 2022*

## Centenary Home and Garden at the Dualla Show

The Dualla Show was back this year and our horticulturist, Ultan Nesbitt, gave a series of talks throughout the day, on topics such as how to harvest your kitchen garden, care and maintenance of roses, autumn planting spring bulbs and autumn/ winter containers, window boxes and hanging baskets.



James Byrne, Liam Grimes, Ultan Nesbitt and Jamie Kinane from Centenary Thurles at the Dualla Show.



## Roscrea Open Day

We celebrated the relaunch of our Roscrea branch with an Open Day, which was a huge success.

We had specialists in house on the day from ColourTrend Paints, Gain Dog Food, Gem Oils and Hydrowear as well as entertainment from the National Reptile Zoo, Bernardo the Magician, face painters and outdoor amusements.



## Stockproof Fencing at the Ploughing Championships

We were delighted to have Stockproof Fencing at this year's Ploughing Championships in Ratheniska, Co. Laois.

## Preventing winter forage deficits this winter, from Centenary Agri's Animal Nutritionist, Howard Stanley.

Every year brings its own challenges and the year 2022 has been no different.

As we are all aware, we had a significantly dry period from July to mid-September where we had no rain and very poor grass growth. As a result, many farmers were forced into using the winter forage feed reserves to feed animals until fresh grass started growing again. The geographical location certainly had a big factor to play in this as heavier type soils did not suffer from drought for as long, with some farmers having to feed more silage than others. Then we had a very wet month of October, and in some cases, animals were housed earlier than normal. In many cases there has been a lot of feed consumed at farm level and I have a few suggestions that will help to stretch feed remaining reserves. The age old saying comes to mind while writing this article – “if you fail to plan, you plan to fail”.

- You can't manage what you don't measure,** so measure both the quality and quantity of feed available on the farm. The first thing to do is measure the actual quantity available on farm. I have included Teagasc calculation tables below so you can fill out the relevant boxes to calculate your fodder reserve. It's also important to test the actual silage quality. This will give an indication of how good the silage is, so our feed advisors can make accurate feed recommendation based on these results to ensure required performance targets are being met and help you decide if you need to supplement animals or not.
- Group young stock/ stores appropriately.** This is an area where significant levels of forage may be reduced. The advice I would give to the beef farmers is group your animals according to weight and size. Animals selected for finishing should be fed with concentrates and this will save silage anyway. Store animals or young animals going to grass next spring could be fed with a small quantity of concentrates that will reduce silage consumption. For every 1 kg of concentrate being fed, you will save approx 3kg of silage. Remember store / maiden heifers / incalf heifers will eat 2% of their current weight in dry matter. For example, a 500kg animal will consume 10kg of dry matter/head/day. If silage is 30% dry matter, then this equates to 30kg fresh weight. If you introduce 1kg/head/day of feed, this will reduce silage usage to 27kg. Similarly, if you

are in a scenario where there is top quality leafy silage that would support your target weight gain and you don't require any concentrate, you would be in a position to still add some straw to the diet and even a small quantity of concentrate to stretch out what feed is left. 1kg of straw + 1kg of concentrate would save approx. 6kg fresh weight of silage.

- Body condition score cows and group appropriately.** Body condition scoring cows is a key area to save feed. The target Body Condition Score (BCS) at dry off is 3 and the target BCS at calving is between 3- 3.25. Having over condition cows is only bringing trouble to you at calving time. My suggestions would be to group cows according to BCS. The “thin” cows may need to be fed some concentrate along with silage to improve cow condition and fat cows may need to be fed 3-4kg of straw plus silage. I personally am not a fan of restricted feeding because the cow's appetite is reducing as she comes closer to calving anyway. When she calves down, the cow's feed intake can often be too reduced that the cow can't eat enough to support milk yield, loses too much condition and won't go in calf. Therefore, for fat cows, keep feed intake up by introducing straw and the straw will keep energy levels down and therefore she won't get too fat. Consideration should be taken with cull cows. They are going to eat a significant quantity of silage and the economics will decide if it is best to sell in a mart or a factory.
- Buy in feed to replace fodder deficit.** The main factor here is the availability of feed for sale and how it fits into a diet. When comparing prices, it is important to compare the price of feed on a dry matter basis, for example you need 5kg of fodder to equate to 1kg of rolled barley. If you purchase hay or stemmy silage, care must be taken when fed to dry cows. Silage with a high portion of stemmy grass will usually mean a higher level of potassium. Potassium will affect magnesium uptake in dry cow diets and therefore mineral inclusion may need to be altered or adjusted. When purchasing feed, the decision should be made on how it fits into your own operations. There may be some maize silage available at some stage throughout the spring. I have received numerous phone calls from farmers enquiring about feeding fodder beet to cows. Avoid feeding dry, precalving cows fodder beet as calcium levels are too high and will cause milk fever and perhaps other complications at calving. However, fodder beet would be very beneficial to freshly calved cows as it will help boost feed intakes and increase energy in the diet.

In summary, measure silage reserves, take action in time and if you need to purchase feed, talk to your feed advisor to see what might best suit your system.

### Section 1. What Fodder is required on the Farm?

	A	B	C	
Animal Type	No. of Stock to be kept over Winter	Number of Months (Include a 4-6 week reserve)	Pit Silage Needed, tonnes/animal/month	Total Tonnes of Silage Needed Multiply (AxBxC)
Dairy cows			1.6	
Suckler cows			1.4	
0-1 year old			0.7	
1-2 year old			1.3	
2+ year old			1.3	
Ewes			0.15	

Total tonnes needed D

Total bales needed (tonnes multiplied by 1.25) E

### Section 2. Calculate the forage in the yard

<b>i. Pit silage</b>	Length x breadth x settled height metres ÷ 1.35 =		Silage in the pit (t)
			F
<b>ii. Bales of silage</b>	G	H	
	Number of bales	Yield / bale	Total yield (t) (GxH)
		0.8 t / bale	I
<b>iii. Other forages</b>	Bales or tonnes		Silage Equivalents (see table below) (t)
Total Yield of Other Feeds			J
<b>Converting other forages to silage equivalents</b>		<b>Silage Equivalents @25% DM (tonnes)</b>	
20 bales of hay (4x4)		is equivalent to 16 tonnes fresh silage	
20 bales of straw (4x4)		is equivalent to 10 tonnes fresh silage	
20 tonnes fresh maize silage		is equivalent to 24 tonnes fresh silage	
20 tonnes fresh whole crop cereal silage		is equivalent to 32 tonnes fresh silage	
20 tonnes fresh forage crop (kale, rape, hybrid)		is equivalent to 10 tonnes fresh silage	

### Section 3. Calculate surplus / deficit

Total silage demand (D) minus total silage produced (F, I, J) = D - F - I - J		
% deficit = (deficit in tonnes + total demand in tonnes) x 100		

## Recipients of the 2022 Ag Scholarships

Each year Centenary Thurles offers scholarships to sons and daughters of shareholders who attend agricultural college. Our 2022 recipients were

<b>Ronan Carroll</b> Loughmore, Templemore	<b>Kildalton</b>
<b>Michael Coffey</b> Killea, Templemore	<b>Gurteen</b>
<b>William Maher</b> Cassstown, Thurles	<b>Salesian Agricultural College, Pallaskerry</b>
<b>Thomas Ryan</b> Two-Mile-Borris, Thurles	<b>Kildalton</b>

Congratulations to them all and we wish them the very best of luck in their studies.

To enquire about scholarship applications for 2023, please contact Tom Nyland at **(0504) 34038** or email [tnyland@centenarythurles.com](mailto:tnyland@centenarythurles.com)

## NDC Kerrygold Quality Milk Awards

The Hogan family were our nominee for the National Dairy Council/ Kerrygold Milk Quality Awards. They were the Category Award winner for the Herd Genetic EBI Award.



L-R: John Martin, Lorraine Hogan, Brian Hogan, Kay Hogan, Pat Hogan and Denis Kennedy.

## Signpost Farm Walk at John Sheridan's farm

On 29th September we organised a Teagasc Signpost Farm Walk at John and Debbie Sheridan's farm in Killoshane, Borrisoleigh.

Speakers included Pdraig Costigan (Teagasc), Dr Seamus Kearney (Signpost specialist), Shane O' Hanlon (Signpost Advisor), Claire Mooney (ASSAP Advisor), Kate McCarthy (UCD) and John Martin (Centenary Thurles). Topics included tips on reducing your carbon footprint, MSS/ Clover, Water Quality, how to qualify for 0.5 cent/ litre sustainability bonus, autumn grass management and fodder options.



## Important Reminder about agricultural / equine fencing that has been treated with creosote

From 30 April 2023, it will be prohibited to place on the market and sell agricultural / fencing that has been treated with creosote. Stocks of creosote treated timber not sold by this date may be subject to destruction as hazardous waste or subject to re-export outside of the EU. All timber fencing posts purchased for grant-aided fencing must be treated and certified in accordance with I.S. 436.

## AHI Cell Check Awards

The Animal Health Ireland Cell Check Awards Ceremony for 2021 was held last month in the Killashee Hotel, Naas. This ceremony is held each year to recognise the 500 milk suppliers with the lowest Somatic Cell Counts. We understand that the 'cut' for 2021 was an average SCC across the year of 73. We had 5 winners at this ceremony:

**Martin Cleary**  
Clonfad, Glasshouse, Shinrone

**John Fogarty**  
Curraghscarteen, Fethard

**Richard Fogarty**  
Ballyduagh, Cashel

**Eugene O'Dwyer**  
Camas, Cashel

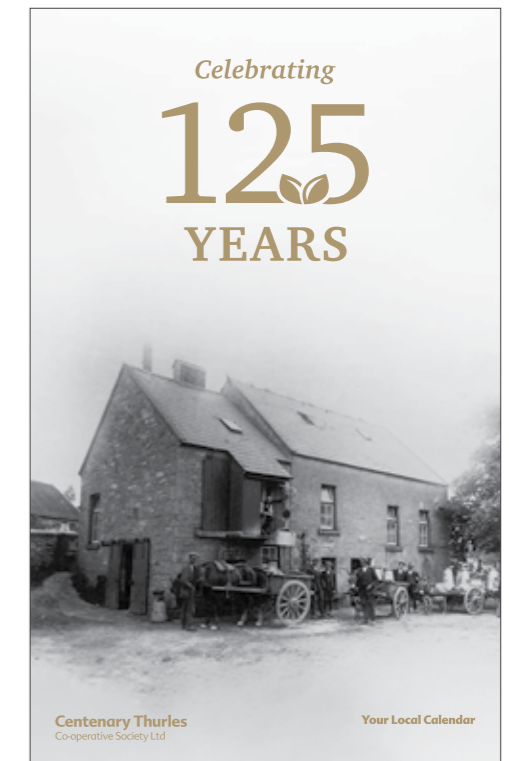
**Eamon Power**  
Leigh, Two-Mile-Borris

Richard Fogarty received an additional award, having the lowest SCC for 2021 in the Centenary Thurles area. Congratulations to all five winners.



## 2023 Calendar

Our 2023 Calendar is now available at all branches. A feature of this calendar is a selection of historical photos to mark 125 years of the Society, having been founded in 1898. These calendars are sure to be in demand so if you are interested in having one for you or for a relative, call to your local branch as soon as possible.



## Dairy Nut Bonus

A reminder again that a milk bonus equating to €15 per tonne on 16% and €25 per tonne on 18%+ will be paid on all Dairy Nuts from our standard range, purchased by and delivered to suppliers between 25th November 2022 and 25th January 2023. Terms and conditions apply — see our Milk Payment System Booklet. It is a bonus worth availing of, given the high cost of feed at present.

## Milk Loyalty Bonus

Milk Suppliers should now have received their Loyalty Bonus Cheque. Approximately €750,000 has been distributed to Suppliers based on their trade with the Society during 2021. Your support and commitment to our Branches and Feed Mill has been acknowledged through this payment. We thank you for that support and look forward to it continuing in the years ahead.

## Cyber Attack – Update

As most of you are now aware, this Society was hit by a significant cyber-attack overnight on the 28th/29th September. This caused us significant disruption and in the first instance, I would like to acknowledge your patience with us as we sought to restore our systems. More than two months have elapsed since and on a step-by-step basis, we restored the many systems we rely on daily. We believe that little, if any, data was exfiltrated. However, our systems were encrypted and rendered inoperable without the encryption key. We made the decision to restore our systems, despite the obvious difficulties and inconvenience in doing so, rather than succumb to any ransom demand for the encryption key. Whilst we are now more or less back to normal, we have had to make some changes in the way we operate. We have also had to invest in enhanced security measures as this type of crime is becoming a bigger threat for businesses worldwide.

## Glanbia plc Share Spin-Out

Shareholders will be aware that at a Special General Meeting last May, approval was granted to spin-out Glanbia plc shares directly to our shareholders. This followed four previous such spin-outs as the then Glanbia Co-Op reduced its shareholding in the plc. Revenue approval was once again sought to enable these shares to be spun-out without incurring a tax liability in the hands of our shareholders, at least until the shareholder decided to dispose of them. Unfortunately, Revenue this time refused to grant the concession that would have enabled this transaction to proceed as planned. As such we are now on hold, pending advice on how we can get value to shareholders in the most tax-efficient manner possible.

## Harvest Report

2022 Harvest saw our intake reach a little over 20,000 tonnes, which is our optimum level to ensure all grain can be stored/utilised on site in Ballyduff. Barley averaged 15.6% moisture; Rye 16.1%; Oats 15.6% and Wheat slightly higher at 16.7%. Price paid was in the region of €100 per tonne higher than in 2021. Barley price reached the record level of €310 excluding VAT & Haulage, with Rye making the same price; Oats was €5 lower and Wheat €8 above barley. Whilst there were some yield issues with winter barley due to disease, overall, it was an excellent harvest for growers.

## ICOS Calf Welfare Charter

ICOS, together with dairy industry stakeholders and representatives of dairy co-operatives, has devised a Calf Welfare Charter, setting out key principles which the entire industry will abide by to ensure that the highest possible welfare standards apply to all calves produced on Irish dairy farms.

The updated terms of the Charter will be incorporated into the Terms and Conditions of milk supply which apply to the various Milk Supply Agreements in place between farmers and their milk purchasers and into Ornuá's Member Supply Agreements.

The terms of the Charter are as follows:

1. The dairy industry commits to a common policy whereby from the 1st of January 2024, no healthy calf can be slaughtered within the first 8 weeks of life, except under force majeure circumstances. Implementation will be pursued in collaboration with DAFM and relevant state agencies.
2. On-farm euthanasia of healthy calves is prohibited.
3. It is not acceptable for herds supplying milk to have an on-farm calf mortality rate that is significantly higher than the normal prevailing range except under exceptional circumstances, e.g., disease outbreak.
4. Dairy and beef stakeholders will commit to the development and adoption of breeding technologies and practices to increase the quality and value of calves from the dairy herd, to enable the functioning of a viable supply chain for all calves.
5. Milk suppliers must adhere to best practice in relation to the early stages of rearing, housing and feeding of all calves, in line with industry best practice guidelines (FAWAC, Teagasc & AHI).
6. Dairy and beef stakeholders will establish a defined programme to support the implementation of the Charter, in collaboration with the DAFM Calf Welfare Stakeholder Group. This will be under-pinned by a series of Key Performance Indicators (KPI's), which will be made available to herds and collaborating bodies, as part of the initiative. In addition, a national publicly funded genotyping programme is an essential element to these efforts.
7. The responsibility lies with DAFM to implement animal welfare regulations.

## Sustainability Bonus Payment 2023 & 2024

For 2023 & 2024, a sustainability bonus payment of 0.5c per litre including VAT will be paid to all eligible milk suppliers. This payment, which will be shown separately on your milk statement, is entirely optional for you. Should you wish to avail of the payment, you should select from the menu of 15 options on the form posted out to you. 7 actions will be required to achieve the full bonus payment with a minimum of 1 action needed to secure a part payment.

You must submit your preferred actions on the application form and return to the Lab in Ballyduff (or any Centenary Thurles Branch) on or before 31st December 2022.

Payment can only be made on receipt of a completed application form – we strongly recommend that you avail of the Scheme, which for the average milk supplier would amount to an additional annual payment of approximately €3,000.

If you have mislaid your form or have any queries relating to the submitting of this application, please contact any of our sales/advisory staff.

S&P Option	On-Farm Action	Requirement	When Action to be taken	Option to be selected for payment. Tick box where applicable
Maintaining Grass Growth	Grass cover measurement & attached to Pasturebase Ireland or equivalent	Minimum of 10 acres updated / year	2022	<input type="checkbox"/>
Cover Incorporation	Clover seed purchased in 2020-2022 from Centenary Agri	Minimum purchase of 1 kg of straight clover or 5kg equivalent clover as part of a grass seed mixture	2020-2022	<input type="checkbox"/>
Multi-Species Seeds	MSS seed purchased in 2020-2022 from Centenary Agri	Minimum purchase of seed required for sowing 2 acres (20kg)	2020-2022	<input type="checkbox"/>
Milk Recording	Engage in milk recording for the herd	Minimum of four recordings / year	2022	<input type="checkbox"/>
Improve Herd EBV	EBV of the year is improved on the previous year	Improvement of €1 or greater required	2022 vs 2021	<input type="checkbox"/>
Low Emission Slurry Spreading	Spread Slurry using Low Emission Equipment	Some or all slurry spread by LESE	2022	<input type="checkbox"/>
Purchase of Protected Line	Purchase of protected line (wrecker from Centenary Agri)	1/3 line purchased per 100,000 litres of milk supplied in 2022	2022	<input type="checkbox"/>
Additional native bees	Additional native bees on the farm	Minimum 20 bees purchased and planted	2022	<input type="checkbox"/>
Additional hedgerows	Additional hedgerows on the farm	Minimum 100 hedgerow plants purchased and planted	2022	<input type="checkbox"/>
Nutrient Management Planning	Soil Nutrient Management Plan in place	ANP in place for 2022	2020-2022	<input type="checkbox"/>

## Christmas Year End / Stocktaking Arrangements 2022

At this time of the year, it is opportune to remind everyone that our stores will close over the Christmas period and also over the New Year on a rolling basis to facilitate our Annual Stocktake. We hope as always to provide the best possible service to you during the period. For stocktaking days, there will be an alternative branch available to you in reasonable proximity.

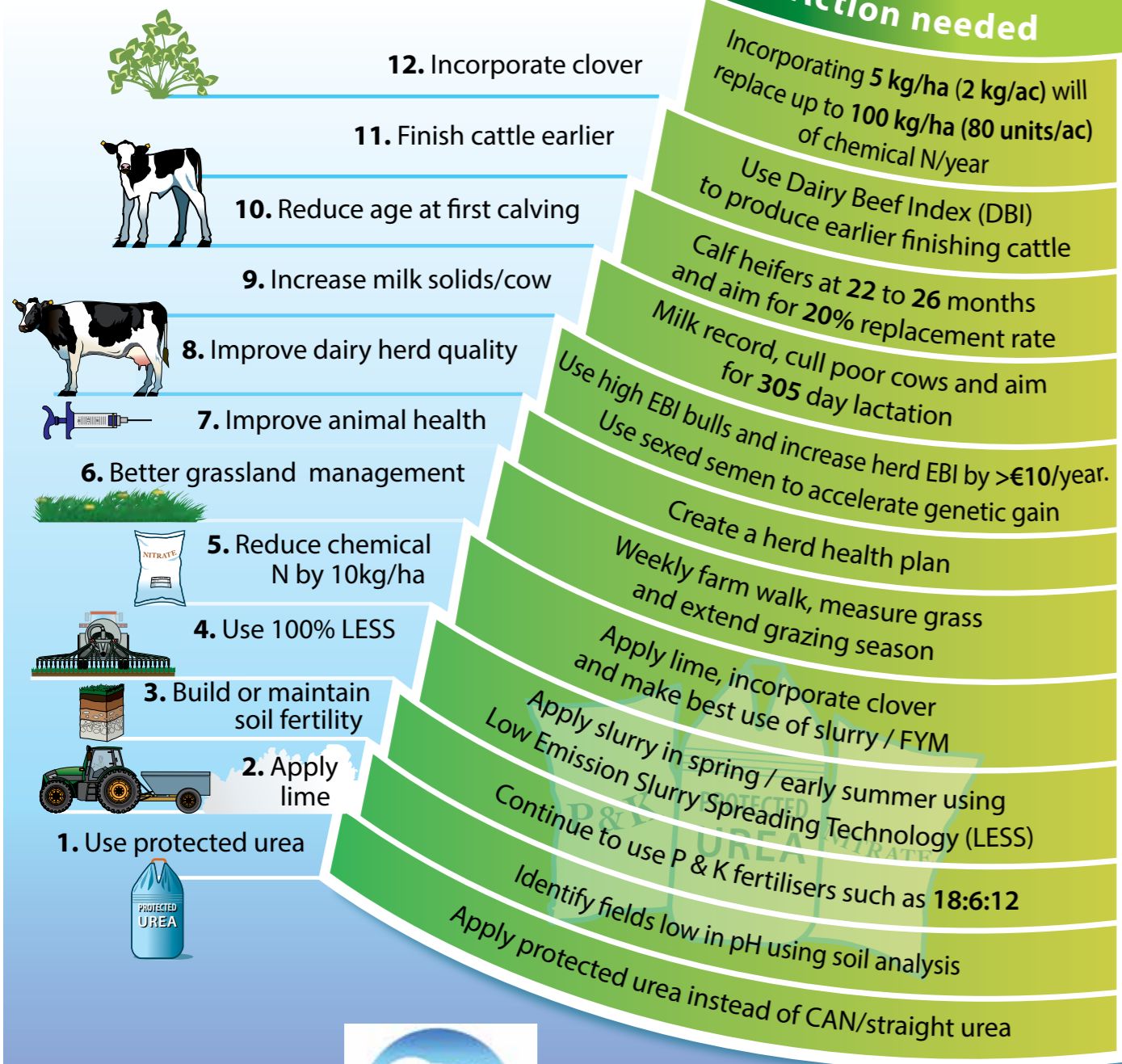
**All our stores will be open on Christmas Eve and will close at 4.00pm. They will re-open for business as normal on Thursday morning, 29th December.**

Stocktaking closures are as follows:

<b>Friday 30th December</b>	Roscrea closed all day. (STOCKTAKING) Loran closed all day. (STOCKTAKING)
<b>Saturday 31st December</b>	Templemore closed all day. (STOCKTAKING) Ballyduff closed all day. (STOCKTAKING) Montore closed all day. (STOCKTAKING)
<b>Monday 2nd January</b>	All Branches closed.
<b>Tuesday 3rd January</b>	Thurles Mealstore closed all day. (STOCKTAKING) Thurles Home & Garden closed all day. (STOCKTAKING)
<b>Wednesday 4th January</b>	Cashel closed all day. (STOCKTAKING)
<b>Thursday 5th January</b>	Littleton closed all day. (STOCKTAKING)



# Where are you on the 12 Steps to reduce Gaseous Emissions on YOUR FARM?



## Winter Promotion

# Animal Health Medicines



Animec Pour-On	1L €34.99, 3L €64.99, 5L €89.99
Animec Super	50ml €24.99, 250ml €59.99, 500ml €94.99, 550ml €109.99
Albex 10%	1L €29.99, 2.5L €47.99, 5L €64.99
DoraMax Pour On	1L €74, 3L €162, 5L €250
Cepralock Teat Sealant	2.6g tube €1.15

**Offer available until 31st December or while stocks last.**

**centenarythurles.com** Telephone: 050491900 Facsimile: 050422657

 @centenaryagri | @centenaryhomeandgarden  @CThurles

